

**JOIN US!**  
**THE UTAH**  
**LAND USE**  
**INSTITUTE**  
 October 14, 2008

Utah Land Use Institute  
 60 East South Temple, Suite 1200  
 Salt Lake City, UT 84111

*Join several hundred attorneys, planners, real estate professionals, appraisers, property owners, public officials, and others to discuss the most recent developments in land use law and the*

**Join Us!**

**This year's topics:**  
 A Wasatch Megalopolis  
 Salt Lake City's Vision  
 The Housing and Energy Crisis  
 Recent Appellate Decisions  
 and Legislation  
 Geologic Hazards Ordinances  
 Incorporation, Disconnection,  
 and Ballot Box Zoning  
 Public Rivers/Private Roads  
 Exactions and Impact Fees  
 Civil Rights and Attorneys Fees  
 Expedited Land Use Processes  
 Ethics—Land Use Professionals

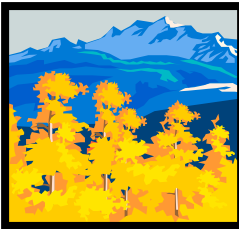
You may also register online using a credit card at [www.utahlanduse.org](http://www.utahlanduse.org) or call 801-859-2255. Thanks! See you there!

Utah Land Use Institute,  
 60 East South Temple, Suite 1200  
 Salt Lake City, UT 84111

Please include a check payable to the Utah Land Use Institute and mail to:

NAME: \_\_\_\_\_  
 ORGANIZATION/COMPANY \_\_\_\_\_  
 STREET: \_\_\_\_\_  
 CITY \_\_\_\_\_ STATE \_\_\_\_\_ ZIP \_\_\_\_\_  
 TELEPHONE \_\_\_\_\_ EMAIL \_\_\_\_\_

**Utah Land Use Institute—Registration Form**  
 Tuesday, October 14, 2008—Red Lion Hotel—161 West 600 South, Salt Lake City, UT  
**Sign Me Up!** I want to attend the Utah Land Use Institute on Tuesday, October 14, 2008.  
 The cost is \$125.00 for registrations received by September 30; \$140.00 thereafter.



**THE UTAH LAND  
USE INSTITUTE  
October 14, 2008**  
The Red Lion Hotel  
161 West 600 South  
Salt Lake City, UT

**PROGRAM**

7:45 a.m. **Continental Breakfast**

8:30 **Welcome – Connie Howard**, ULUI Chair;  
**Mike Ostermiller**, Moderator

8.45 **Keynote Addresses :**  
**A Wasatch Front Megalopolis.** Our resident national expert will present key drivers behind our incredible growth along with implications for planning and public policy and highlight the pending choices that we are faced with.  
**Dr. Arthur C. “Chris” Nelson**, Presidential Professor, University of Utah.

9:45 **Salt Lake City’s Vision for the Future.** Another nationally-recognized commentator who has also recently taken on major responsibilities in Utah will continue the conversation on about planning for the near future.  
**Frank Gray**, Director of Community Development, Salt Lake City

10:15 **Break**

10:30 **The Housing and Energy Crises:** The leading in-termountain economist will discuss what we in Utah can do and what timing will be necessary.  
**Dr. Kelly Matthews**, Executive Vice President and Economist with Wells Fargo Bank.

11:00 **Questions and Comments**

11:15 **Recent Cases and Legislation:** Three prominent local attorneys will discuss recent case law and legislation of importance to land use professionals and local decision-makers.  
**Jody Burnett**, Williams & Hunt, PC;  
**Neil Lindberg**, Atty, Provo Municipal Council;  
**Kevin Egan Anderson**, Anderson Call, PC

Noon **Lunch – Provided to All in Attendance**

12:15 **Luncheon Presentations:** A prominent attorney involved in each of three recent cases of significance to the land use community will present his commentary of the facts and law involved.  
**Prof. John Martinez**, Univ. of Utah;  
**Ron Russell**, Parr Waddoups;  
**Steve Homer**, Attorney at Law.

1:30

**Breakout Sessions:**

**Geological Hazards Ordinances.** Representative local ordinances will be reviewed with specific recommendations for fair regulation.

**Scott Carter**, Layton City;

**Bruce Baird**, Hutchings Baird.

**Incorporation, Disconnection, and Ballot Box Zoning.**

**Joe Tesch**, Tesch Law Offices, PC

**Craig Call**, Land Use Institute

**Public Rivers/Private Roads** – Landmark decisions determined access rights across rural roads and streambeds this year.

**Ron Russell**, Parr Waddoups;

**Brent Bateman**, Property Rights Ombudsman

2:40

**Breakout Sessions:**

**Exactions and Impact Fees** How have legislation, court opinions, and the economy changed how municipalities can build infrastructure and plan for water resources?

**Gary Crane**, Layton City Attorney

**Steve Homer**, Attorney

**Craig Smith**, Smith Hartvigsen.

**A New Dawn for Civil Rights Actions in Land Use?** Can the federal Civil Rights Act of 1871 be used against local government in land use cases? When will local government pay legal fees to property owners?

**Prof. John Martinez**, University of Utah Law School;

**Barton Kunz**, Christensen & Jensen, P.C.

**Expedited Land Use Procedures.** New opportunities and responsibilities to simplify land use decision-making and appeals.

**Christine Richman**, Wikstrom Econ. Planning Consults;

**Chris Gamvroulas**, Ivory Development.

3:50

**Combined Session – Land Use Ethics.** “Best practices” for dealing with the complexities, the deadlines, the pressures, and moral challenges of being a land use professional?

**David Hirschi**, Hirschi Christensen, PLLC

**Craig Hall**, Chapman and Cutler LLP

**Denise Dragoo**, Snell & Wilmer LLP

**Adjourn.**

*For the complete program and online registration, visit [www.utahlanduse.org](http://www.utahlanduse.org).*

*For more information, call 801-859-2255*

**CREDIT HOURS:** Attorneys: 6 hours (including 1 hour of ethics); Real Estate: 7 hours; Appraisers: 7 hours.

**The Utah Land Use Institute**

And its programs are supported by the

Utah State Bar, Utah League of Cities and Towns, Utah Association of Realtors®,

Office of the Property Rights Ombudsman, Quality Growth Commission/Governor’s Office of Planning and Budget, and Questar.